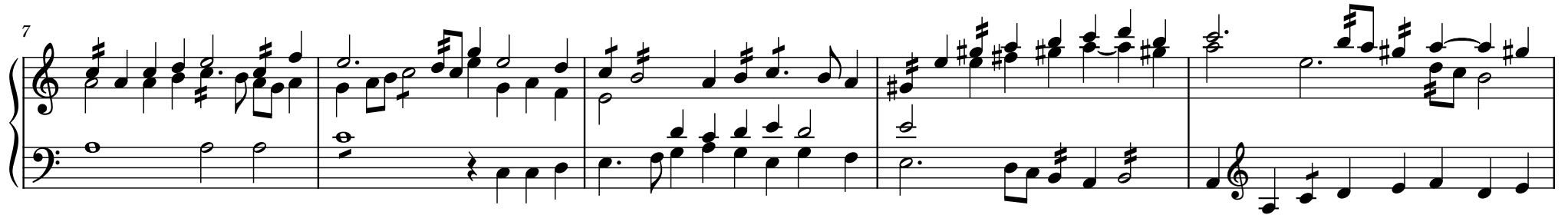


# Gibbons Fantasia in d (MB 8)



Measures 12-16 of the Gibbons Fantasia in d. The notation continues with a treble clef and a key signature of one sharp (F#). The music features a mix of single notes, dyads, and triads, with a steady eighth-note accompaniment in the lower register.

Measures 17-21 of the Gibbons Fantasia in d. The notation continues with a treble clef and a key signature of one sharp (F#). The music features a mix of single notes, dyads, and triads, with a steady eighth-note accompaniment in the lower register.

23

Measures 23-25 of a musical score. Measure 23 features a treble staff with a rapid ascending sixteenth-note scale and a bass staff with a half note G2 and a whole note F2. Measure 24 continues the treble staff's scale and adds a half note G2 in the bass. Measure 25 shows the treble staff concluding with a quarter note G4 and a half note F4, while the bass staff has a half note G2 and a whole note F2.

26

Measures 26-29 of a musical score. Measures 26-27 show the treble staff with a half note G4 and a whole note F4, and the bass staff with a half note G2 and a whole note F2. Measures 28-29 show the treble staff with a half note G4 and a whole note F4, and the bass staff with a half note G2 and a whole note F2.

30

Measures 30-33 of a musical score. Measure 30 features a treble staff with a half note G4 and a whole note F4, and a bass staff with a half note G2 and a whole note F2. Measures 31-33 show the treble staff with a half note G4 and a whole note F4, and the bass staff with a half note G2 and a whole note F2.

34

Measures 34-37 of a musical score. Measure 34 features a treble staff with a half note G4 and a whole note F4, and a bass staff with a half note G2 and a whole note F2. Measures 35-37 show the treble staff with a half note G4 and a whole note F4, and the bass staff with a half note G2 and a whole note F2.

38

Measures 38-42 of a musical score. The system consists of two staves, Treble and Bass. Measure 38: Treble has a half note G4, quarter note A4, quarter note B4, quarter note C5, quarter note B4, quarter note A4, quarter note G4; Bass has a half note E3, quarter note F3, quarter note G3, quarter note A3, quarter note G3, quarter note F3, quarter note E3. Measure 39: Treble has a half note A4, quarter note B4, quarter note C5, quarter note B4, quarter note A4, quarter note G4, quarter note F#4; Bass has a half note F#3, quarter note G3, quarter note A3, quarter note B3, quarter note A3, quarter note G3, quarter note F#3. Measure 40: Treble has a half note B4, quarter note C5, quarter note D5, quarter note C5, quarter note B4, quarter note A4, quarter note G#4; Bass has a half note G3, quarter note A3, quarter note B3, quarter note C4, quarter note B3, quarter note A3, quarter note G3. Measure 41: Treble has a half note C5, quarter note D5, quarter note E5, quarter note D5, quarter note C5, quarter note B4, quarter note A#4; Bass has a half note A3, quarter note B3, quarter note C4, quarter note D4, quarter note C4, quarter note B3, quarter note A3. Measure 42: Treble has a half note D5, quarter note E5, quarter note F#5, quarter note E5, quarter note D5, quarter note C5, quarter note B#4; Bass has a half note B3, quarter note C4, quarter note D4, quarter note E4, quarter note D4, quarter note C4, quarter note B3.

43

Measures 43-45 of a musical score. The system consists of two staves, Treble and Bass. Measure 43: Treble has a half note G4, quarter note A4, quarter note B4, quarter note C5, quarter note B4, quarter note A4, quarter note G4; Bass has a half note E3, quarter note F3, quarter note G3, quarter note A3, quarter note G3, quarter note F3, quarter note E3. Measure 44: Treble has a half note A4, quarter note B4, quarter note C5, quarter note B4, quarter note A4, quarter note G4, quarter note F#4; Bass has a half note F#3, quarter note G3, quarter note A3, quarter note B3, quarter note A3, quarter note G3, quarter note F#3. Measure 45: Treble has a half note B4, quarter note C5, quarter note D5, quarter note C5, quarter note B4, quarter note A4, quarter note G#4; Bass has a half note G3, quarter note A3, quarter note B3, quarter note C4, quarter note B3, quarter note A3, quarter note G3.

46

Measures 46-48 of a musical score. The system consists of two staves, Treble and Bass. Measure 46: Treble has a half note G4, quarter note A4, quarter note B4, quarter note C5, quarter note B4, quarter note A4, quarter note G4; Bass has a half note E3, quarter note F3, quarter note G3, quarter note A3, quarter note G3, quarter note F3, quarter note E3. Measure 47: Treble has a half note A4, quarter note B4, quarter note C5, quarter note B4, quarter note A4, quarter note G4, quarter note F#4; Bass has a half note F#3, quarter note G3, quarter note A3, quarter note B3, quarter note A3, quarter note G3, quarter note F#3. Measure 48: Treble has a half note B4, quarter note C5, quarter note D5, quarter note C5, quarter note B4, quarter note A4, quarter note G#4; Bass has a half note G3, quarter note A3, quarter note B3, quarter note C4, quarter note B3, quarter note A3, quarter note G3.

49

Measures 49-53 of a musical score. The system consists of two staves. The upper staff is in treble clef and the lower staff is in bass clef. The key signature has one sharp (F#). The music features a complex melodic line in the upper staff with many beamed sixteenth and thirty-second notes, and a more rhythmic accompaniment in the lower staff. Measure 53 ends with a repeat sign.

54

Measures 54-57 of a musical score. The system consists of two staves. The upper staff is in treble clef and the lower staff is in bass clef. The key signature has one sharp (F#). The music continues with intricate melodic patterns and rhythmic accompaniment. Measure 57 ends with a repeat sign.

58

Measures 58-61 of a musical score. The system consists of two staves. The upper staff is in treble clef and the lower staff is in bass clef. The key signature has one sharp (F#). The music concludes with a final cadence in measure 61, marked by a double bar line.